



DOUBLE DISC OPENERS, SEED OPENERS/GRAIN DRILLS



G8IHCD
OEM NO.:1263938C1
 1277891C91
Weight:2.06 lbs
 8"x0.118" Covering Disc assembly for Case-IH and New-Holland planter: consist of Blade,bearing retainer,rivets, 204PY3 bearing and dust cap,Fits Case-IH planters 1200,1200T,1210, 1220,1230,1240,1250,5400,5500,800, 900,950,955,Fit New Holland planters, sp280 Rigid, sp380 uounted,sp480 rigid,sp580 pivot.



G8JDCD
OEM NO.: AA33061
 AA58321
Weight:2.06 lbs
 8"covering disc for John Deere planter covering wheel.includes disc blade, 204PY3 bearing, rivets,retainers and 15DUSTCMTL dust cap.



G58321
OEM NO.: AA33061
 AA58321
Weight:2.08 lbs
 8"covering disc for John Deere planter covering wheel. includes disc blade, 203NPP9 bearing,rivets,retainers and 15DUSTCMTL dust cap, applications:Maxemerge 2 7200&7300 series planters.



G6000
OEM No.:N/A
Weight:2.5 lbs
 8" Notched covering disc for CASE- IH,John Deere and Monosem planters, fits late model 800 series, all 900 series and 1200 series. Used in conjunctions with G6001 notched disc. with dust cap 15DUSTCMTL.



G6001
OEM No.:N/A
Weight:2.5 lbs
 8" Notched covering disc for IH planters, fits late model 800 series, all 900 series and 1200 series. Used in conjunctions with our G6000 notched disc. with dust cap 15DUSTCMTL.



G107-133S
OEM No.:107-133S
 A600157
Weight:5.20 lbs
 13.5" Drill Disc assembly. Uses 205 series bearing.3.0 mm Ingersoll Blade. Has a 5/8" hole. Cap is 205GPC. Will replace A600157, 107-133S.



G107-135S
OEM No.:107-135S
 A600157
Weight:6.30 lbs
 13.5"x 3.5mm Drill Disc assembly. Uses 205 series bearing.3.5mm Ingersoll Blade. Has a 5/8" hole. Cap is 205GPC. Will replace A600157, 107-135S.



G57466
OEM NO.:AA57466
 AA27458
Weight:6.77 lbs
 13.5" x 3.5mm disc seed opener with G2400 hub and 204PY3 bearing.



G107-138S
OEM No.:107-229S
 107-054S
Weight:6.94 lbs
 13.5" Seed opener assembly for Great Plains grain drills. Has 4mm(.157) thick blade and a heavy 205 series bearing(205DDS5/8). Comes complete with dust cap(W205CAP). 2 required per row. Fits drills with 13.5" double disc opener.replaces GP No. 107-138S.



G90850
OEM No.:90850C92,
 1344911C3
Weight:6.99 lbs
 LH 14" CASE disc heavy duty seed opener blade assembly for Case Inter. Model 800, 900, 950, & 1200 Planters and 5400, 5500 Grain Drill. L.H.-taper on same side as hub. Will Replace 90850C92. Cap is 204WC.



G90851
OEM No.:90851C92
Weight:6.99 lbs
 RH 14"CASE DISC heavy duty seed opener assembly for Case Inter. Model 800, 900, 950, & 1200 Planters and 5400, 5500 Grain Drill. R.H.-taper on side opposite hub. Will Replace 90851C92. Cap is 204WC.



G37474
OEM No.:AA55927
 AA20242 AA37474 GA2013
Weight:7.60 lbs
 15" Seeder Blade(3.5mm thick)with 204PY3 Bearing and dust cap. Will replace John Deere # AA55927 AA20242 AA37474 Kinze#, GA2013, applications:John Deere 7000-7100 MaxEmerge 2 and 1700 series. MaxEmerge plus planters Kinze 300, white 6000 planters, white:852063 . row unit disc openerassembly.



DOUBLE DISC OPENERS, SEED OPENERS/GRAIN DRILLS



G65248

OEM No.:AA65248
AA33061 AA58321
Weight:7.8 lbs

15" John Deere disc seed opener for planter parts, heavy duty, 3.5mm thick for XP and XP Pro. Uses double row bearing (AA59196) and Dust Cap Will replace JD AA65248. Fit John Deere 1530, 1535, 1700, 1710, 1720, 1730, 1750, 1760NT, 1770, 1770NT, 1780 Planters, with XP row units, 1780, 1790 planters.



GP1534

OEM No.:404-007S
Weight:6.61 lbs

15" disc assembly. Uses 205DDS3/4 bearing for soybean special and double beveled blade. Replaces Great Plains 404-007S.



G15GP

OEM NO.:N/A
Weight:7.72 lbs

15"x3.5mm Great Plains Disc Opener, has 5/8" hole and 205GP bearing.



GA8324

OEM No.:GA8324 AA53860
Weight:7.60 lbs

15" heavy duty (3.5mm thick) seed disc opener assembly. Will replace Kinze GA8324 and John Deere AA53860 Diameter: 15" Thickness: 3.5 or 3.0 mm for TruVee openers on JD and Kinze built before 1999. standard on Kinze 3000 series.



G142664

OEM No.: AN142664,
3400-111
Weight:16.70 lbs

John Deere Rotary Hoe Wheel, 21" Diameter. 16 curved tines with heat treatment, fits for John Deere Tillage(s) 75, 415, 420, 428, 430.



16LH

OEM No.:N/A
Weight:12 lbs

16" Spider Wheel Left Hand Soil Throw Spider only, for Spider Cultivator, will be installed on farm machinery to Churn, Dig, cultivate soil, 15/16" or 25mm Axle, Material: Ductile iron ASTM 65-45-12, GGG40.



16RH

OEM No.:
Weight:12 lbs

16" Spider Wheel Right Hand Soil Throw Spider only, for Spider Cultivator, will be installed on farm machinery to Churn, Dig, cultivate soil, 15/16" or 25mm Axle, Material: Ductile iron ASTM 65-45-12, GGG40.



REPLACEMENT PARTS FOR JOHN DEERE PLANTERS



G37221K

OEM No.:AA54726

Weight:0.94 lbs

John Deere rotating scraper kit, consist of 2 pcs scraper, 2pcs scraper arm, 1 pc spring and 2 cotter pins,Fits JD 1760, 1780,7200&7300 Maxemerge®2.



GRS315K

OEM No.:RS315K

Weight:0.94 lbs

John Deere rotating scraper kit, consist of 2 pcs scraper, 2pcs scraper arm,1 pc spring and 2 cotter pins,fit John Deere models 1530,1535,1700,1720, 1730,1760,1789,1790,7100, 7200 7300 and 7340.



G62559K

OEM No.:AA62559K

Weight: 0.85 lbs

Tungston carbide scraper kit fits John Deere models 1530, 1535, 1700, 1720, 1730, 1760, 1789, 1790,7100, 7200, 7300, 7340.consists of 1-lh, 1rh scraper. 1 lh, 1 rh scraper arm. 1 spring,2 hair clips.



G37221

OEM No.:AA37221

Weight:0.19 lbs

Rotating Scraper Wheel with nylon cover for John Deere Planters,Fits John Deere Planters 1760 (early) 1780 (early) 7000, 7100 With MaxEmerge Row Units, 7200, 7240, 7300, 7340 With Maxemerge® 2 Row Units.



RS315

OEM No.:AH133315

RS315

Weight:0.22 lbs

Rotating Metal Scraper Wheel for John Deere Planter,Fits John Deer planter 7000,7100, 7300,7340 and white planter series 5100,5700,6000,8000.



G62559

OEM No.:AA62559

Weight:0.24 lbs

Tungston carbide scraper kit. Includes 1 right hand and 1 left hand scraper. Mounts on the original rotary scraper arms. Better cleaning of seed disc openers in tough conditions. Tungston carbide is abrasion resistant for longer wear.



G69139

OEM No.:A69139 A55890

Weight:0.24 lbs

Rotary scraper arm, LH, fits all JD, early Kinze. Replaces JD No. A69139 & A55890.



G69140

OEM No.:A69140 AA55891

Weight:0.24 lbs

Rotary scraper arm, RH, fits all JD, early Kinze. Replaces JD No. A69140 & A55891.



G98182

OEM No.:A98182

Weight:0.34 lbs

Scraper for seed disc opener, right. Fits John Deere MaxEmerge®2, MaxEmerge® Plus, Pro, XP, XP Pro, MaxEmerge™5. 1530, 1535 drills. Replace John Deere A98182.



G98183

OEM No.:A98183

Weight:0.34 lbs

Scraper for seed disc opener, left. Fits John Deere MaxEmerge®2, MaxEmerge® Plus, Pro, XP, XP Pro, MaxEmerge™5. 1530, 1535 drills. , Replace John Deere A98183.



G24085

OEM No.:A24085

Weight:0.19 lbs

Outside fertilizer scraper for double disc openers. Two used per row.



G50047

OEM No.:A50047

Weight:0.20 lbs

Rotary scraper arm spring, for both rotating scrapers and Tungsten carbide scrapers. replaces JD No. A50047.



REPLACEMENT PARTS FOR JOHN DEERE PLANTERS



APQ2550-2B

OEM No.:N/A
Weight:5.85 lbs
Gauge Wheel Arm kit for all John Deere planters. Has threaded bushing for proper adjustment of the gauge wheel to the seed disc opener. Updates older planters to the new style arm design. Comes with two different threaded bushings, one for older series of planters and one for the newer series. fit models JD 7100,7200, 7300 & Maxemerge® 1760,1780, 17001,1710,1721 series Planters.



G79648

OEM No.:AA79648
Weight:5.36 lbs
Gauge wheel arm kit for JD planter for models 1720 XP series with threaded bushing and mounting hardware. For wheel that uses cross hole stem bearing Will replace JD AA 79648.



G54179

OEM No.:AA54179
Weight:5.0 lbs
Gauge wheel arm kit for JD planter parts. Includes threaded Bushing and necessary hardware. For wheel that uses cross drilled stem bearing Applications: 7000-7300 Planters, Maxemerge® 2, Maxemerge® Plus Planters, 1530 and 1535 grain drills. Kinze 2000 Series Row units, Replaces AA54179.



G41968

OEM No.:AA41968
Weight:5.0 lbs
Gauge wheel arm kit for JD planter for models 7000,7100, 7200,7300,Maxemerge® 2, with threaded bushing and mounting hardware. For wheel that uses cross hole stem bearing Will replace JD AA41968.



G92817

OEM No.:A92817
Weight:4.78 lbs
Gauge Wheel Arm Kit, consists of Arm(G92816), threaded bushing with 5/8" Hole(G92818), M16X100, M16X70 bolts and 2pcs washer. Fits John Deere MaxEmerge®XP, XP Pro; 1530, 1535 with XP row units.. Replaces OEM # A92817 Fits John Deere Planter / Drill(s) DB37, DB41, DB50, DB55, DB60, DB62, DB74, DB83, DB90 (all DB series s/n 755001-later), 1700, 1710, 1720, 1730, 1750, 1760, 1770, 1775, 1780, 1790, 1795 (all 1700 series s/n 760101-later).



G110200

OEM No.:PLT110200
Weight:5.5 lbs
Gauge wheel arm, thread.



G110210

OEM No.:PLT110220
Weight:5.5 lbs
Gauge wheel arm, roll pin.



G110220

OEM No.:PLT110220
Weight:5.5 lbs
Gauge wheel arm, set screw.



G92818

OEM No.:A92818
Weight:0.86 lbs
Gauge Wheel Arm threaded bushing with 5/8" Hole, used on G92817 Gauge Wheel Arm Kit.



G57057

OEM No.:A57057
Weight:0.40 lbs
Gauge Wheel Arm Bushing for G41968. Inside Diameter -1.00". Replaces JD No. A57057.



G54179B

OEM No.:A57058
Weight:0.79 lbs
Replacement bushing for APQ25502B and AA54179 gauge wheel arm. 16mm hole. Fits late JD 7200 and all Max Emerge Plus. Replaces JD No. A57058.



REPLACEMENT PARTS FOR JOHN DEERE PLANTERS



G22325

OEM No.:A22325 GD1085
Weight:1.41 lbs

1"x12" closing wheel rubber tire, core hole. Replaces JD AA22325, Kinze GD1085, Application: JD Drills: 450,455,515,520,730,750, 1520,1530,1535, JD planters: 803, 805,7000,7100,7200,7300,9200, Kinze:2000&3000 row units.



G38447

OEM No.:AA38447
AN280966, AN281359
Weight:3.66 lbs

1"x10" seed press wheel assembly with bearing. Metal rim halves and rubber tire. Fits models 750, 1560, 1565, 1590, 1690, 1850, 1860, 1890. Replaces JD AA38447, AN280966, AN281359.



G43898

OEM No.:AA43898
Weight:3.80 lbs

1"x12" Planter closing wheel Fits JD 7200, 7300. Has 1 double row bearing with 3 lip seals and nylon wheel halves. Does not have a cap.



G43899

OEM No.:AA43899 GA3086
Weight:3.77 lbs

1"x12" Planter closing wheel Will fit JD 7000, 7100, Kinze Row Unit. (GA3086) Uses cross hole stem bearing (885152).



G39968

OEM No.:AA39968
GA6439 854262 70072767
Weight:3.75 lbs

1"x12" planter closing wheel Fits John Deere MaxEmerge® Plus, Pro, XP, XP Pro, 1530, 1535, White 6000 and 8000 series. Has nylon wheels and uses 5203KYY2 bearing. Will replace JD AA39968, Kinze GA6439, White 854262, Hesston 70072767.



G39968M

OEM No.:AA39968M
Weight:6.39 lbs

Planter closing wheel, steel wheel halves. Fits John Deere MaxEmerge Plus, Pro, XP, XP Pro, 1530, 1535 with uses 5203KYY2 bearing.



G43899M

OEM No.:N/A
Weight:6.5 lbs

1"x12" closing wheel assy, for JD 7000-7100 with. Same as G43899 but with metal wheel halves.



G89397

OEM No.:A89397
Weight:20.81 lbs

John Deere 1"x12" planter cast iron closing wheel with 5203KYY2 bearing.



CAST-XP

OEM No.:AA73763
GA6597,854077
Weight:21.96 lbs

Cast iron closing wheel. Fits John Deere MaxEmerge® Plus, Pro, XP and XP Pro; Kinze® 1993 and after; White 6000 and 8000 series planters.



CAST-72

OEM No.: A47351
Weight:22.02 lbs

Cast wheel with bearings. Fits MaxEmerge2, Monosem; John Deere 750 drill prior to s/n 3834 (mounts on 750 with 5/8" x 8" bolt and nut)



5203KYY2

OEM No.:GA6171
5203KYY2 AN212132
Weight:0.50 lbs

Double row ball bearing with 5/8" ID for closing & gauge wheel, Double Row Angular contact planter bearing.



885154B

OEM No.:885154B
AN131668 822023
Weight:0.42 lbs

Short stem planter, drill, cultivator gauge & closing wheel bearing with groove, Fits John Deere Cultivators-RM, 845 Row Crop Cultivator, 450 Grain Drill. Will replace JD AN131668, Great Plains 822023.



REPLACEMENT PARTS FOR JOHN DEERE PLANTERS



885152

OEM No.:885152,AA21015
AA35741,128558C91, 1
B07032RS, GA2022
Weight:0.41 lbs
Short Stem bearing with hole
-Fits Press Wheel and Closing
Wheel on JD 7000-7100 and
IH 800 Planters - Replaces JD
AA21015 & AA35741, IH
128558C91, Koyo 1B07032RS,
Kinze GA2022.



G35392

OEM No.:AA35392
Weight:19.62 lbs
Gauge wheel assembly.fits
models 7000-7100 series
planters. Also fits 7300 series
planters built planters. bearing
w/cross hole & G25915 bearing
spacer.



G41359

OEM No.:AA41359
Weight:19.00 lbs
Gauge wheel assembly.models
7000 series planters, black
nylon/steel wheel halves
w/885154b bearing & G25915
bearing spacer.



G66604

OEM No.:A66604
Weight:19.00 lbs
Gauge wheel assy nylon/steel
wheel halves & 5203KYY2
bearing.



G22884

OEM No.:A22884,A84050,
GD1086
Weight:7.50 lbs
4.5" x 16" gauge wheel tire with standard
profile offset. Fits John Deere planters with
MaxEmerge™,MaxEmerge®2,MaxEmerge®
Plus, and Pro row units. Also fits John
Deere grain drills 750, 1560,1850, 1860;
1530, 1535 with MaxEmerge®Plus row
units; early 1590, 1690, 1890, 1895, 1990.
Fits Kinze® planters. Fits White planter
models 5100, 5700, 6000, 8000.



G84062

OEM No.:A84062,A77881
Weight:7.50 lbs
4.5" x 16" tire with standard
profile offset. Fits John Deere
planters XP, XP Pro row units;
1530, 1535 with XP. John Deere
drills late 1590, 1690, 1835,
1890, 1895, 1990.



G66988

OEM No.:AA66988,AA56719
Weight:13.90 lbs
Gauge Wheel Assembly, 3"x16",
Fits Case IH® Planter-1200
(ASN CBJ001611), Great
Plains® Grain Drills-Yield-Pro
Models, John Deere® Grain
Drills - 750, 1560, 1590, 1690,
1850, 1860, 1890, 1895, 1990,
Kinze® Planters-1993 and Later,
White® Planters-8000 Series.



G85104

OEM No.:A85104, A56621
87604612
Weight:4.23 lbs
Steel black gauge wheel half. Fits
John Deere planter and drill with
gauge wheels. MaxEmerge®Plus,
Pro planters. 750, 1560, 1850, 1860;
early 1590, 1690, 1835, 1890, 1895,
1990 grain drills. Case New Holland
planters with nylon/steel wheel half
combination gauge wheels; SDX30,
SDX40 air seeders.



G22780

OEM No.:AA22780
Weight:4.23 lbs
Gauge wheel half, yellow fits
MaxEmerge.



G56565

OEM No.:A56565
Weight:3.52 lbs
Nylon gauge wheel half. Fits John
Deere planters and drills with nylon
/steel wheel half combination gauge
wheels. XP and XP Pro planters; 1560,
1590, 1690, 1835, 1860, 1890, 1895
and 1990 grain drills. Fits Case-IH
New Holland planters with nylon/
steel wheel half combination gauge
wheels;



G56566

OEM No.:A56566,GD9120
Weight:0.79 lbs
1"x12" Closing wheel plastic
rim half, the half for G39968.



G45576

OEM No.:A45576
Weight:0.79 lbs
1"x12" Closing wheel plastic
rim half, the half for G43899.



REPLACEMENT PARTS FOR JOHN DEERE PLANTERS



G38106
OEM No.:885154B40
AA38106
Weight:0.73 lbs
 Bearing with a groove to fit gauge wheel assemblies, has a 40 mm O.D. to eliminate the use of the bearing spacer.



G35951
OEM No.:88515240
AA35951B
Weight:0.72lbs
 Bearing with cross hole to fit gauge wheel assemblies, has a 40 mm O.D. to eliminate the use of the bearing spacer.



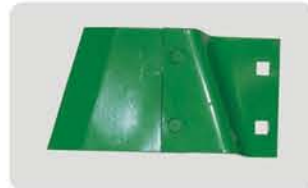
G1785
OEM No.:AP001785
Weight:1.97 lbs
 John Deere Planter V Slice Insert. Slicer knife in one piece from cast chrome material. Used on Maxemerge® and Kinze Row Unit with curved seed tube. Uses 5/16 X 3/4 roll pin.



G1985
OEM No.:AP001985
Weight:2.35 lbs
 New John Deere Planter Parts V Slice Insert, Fits JD XP 1720 series.



G26443
OEM No.:AA26443
GA2012R
Weight:0.40lbs
 Right hand scraper for John Deere Model 7000, 7100 and Kinze Planter disc openers. Will replace JD AA26443, Kinze GA2012R.



G26444
OEM No.:AA26444
GA2012L
Weight:0.40lbs
 Left hand scraper for John Deere Model 7000, 7100 and Kinze Planter disc openers. Will replace JD AA26444, Kinze GA2012L.



G10071
OEM No.:AB10071 GA2052
FC6108
Weight:1.05 lbs
 Down pressure spring with plug for John Deere 7000, 7100 and Kinze Row Unit. Will replace JD AB10071, Kinze GA2052. coil length is 4 3/4" OAL length is 6 1/4". 3/8" bolt thread prior Fits JD MaxEmerge®.



G23116
OEM No.:AA23116 GA2054
Weight:1.92 lbs
 Closing wheel spring with plug for John Deere Model 7000, 7100, and Kinze prior 1993. Replaces AA23116, GA2054.



GA2068
OEM No.:AA28046
AA35876 GA2068
Weight:2.58 lbs
 Heavy duty down pressure spring with plug. Replaces JD No. AA28046 and AA35876; Kinze No. GA2068. Also used on Kinze contact drive wheels.



G43609
OEM No.:A43609
Weight:1.25 lbs
 Standard down pressure spring for John Deere planters. bolts to side of parallel arms. Two or four used per row. Replaces JD No. A43609. Used on Max-Emerge & MaxEmerge Plus.



G41116
OEM No.:A41116
Weight:0.1 lbs
 Tension left hand spring for heavy duty scraper, for John Deere 1700 series planter units and attachments.



G41117
OEM No.:A41117
Weight:0.1 lbs
 Tension right hand spring for heavy duty scraper, for John Deere 1700 series planter units and attachments.



REPLACEMENT PARTS FOR JOHN DEERE PLANTERS



G49644
OEM No.:A49644
Weight:0.1 lbs
 Idler arm spring for Herbicide/ Insecticide drive. Replaces JD No. A49644. Used on 1700, 7200 and 7300 series planters.



G74643
OEM No.:A74643 A47132 A57290
Weight:1.10 lbs
 Closing wheel spring for John Deere Model 1760, 1780 7200, 7300 MaxEmerge® 2 and 7340. Coiled part is 3 3/4", overall length is 7". Replaces JD A47132, A74643, A57290.



G62182
OEM No.:A62182
Weight:0.14 lbs
 Heavy duty seed scraper for models 7200, 7300, 1760, 1780 planters, for use in sticky soils.



G101607
OEM No.:H101607 H147109
Weight:0.41 lbs
 Rotating knife section, bolt-on; six used per row. Fits all John Deere 50 and 50A series row-crop bean heads.



G64447
OEM No.:A64447
Weight:0.13 lbs
 Pin for G62182 heavy duty scraper, replaces JD A64447 fit John Deere models 7200, 7300, 1760 and 1780 planters.



G55143
OEM No.:AA55143
Weight:0.14 lbs
 John Deere pin for planter arm work with G69141.



G55008
OEM No.:A55008 GD7426
Weight:0.03 lbs
 Plastic idler chain sprocket for 1700 series planter units. Also replaces Kinze No. GD7426.



G8833
OEM No.:AP8833
Weight:28.7 lbs
 John Deere complete closing wheel update kit for MaxEmerge® 2, allows closing wheels to be off set to prevent trash build up. also fits MaxEmerge® Pro,XP,XP Pro.



G86763
OEM No.:A69141 A61351 A86763
Weight:8.29 lbs
 Cast Planter closing wheel arm for John Deere MaxEmerge® plus,Pro, Xp pro,1530,1535 series,replaces John Deere A69141,A61351,A86763.



G55889
OEM No.:A55889, A87426
Weight:5.3 lbs
 John Deere cast iron closing wheel arm stop. Fits John Deere MaxEmerge® Plus, Pro, XP; 1530, 1535.Replaces JD No A55889, A87426.



G64237
OEM No.:A64237 A86762
Weight:1.0 lbs
 Handle for closing wheel arm on John Deere MaxEmerge® 2, Plus, Pro, and XP row units. Replaces JD NO. A64237.



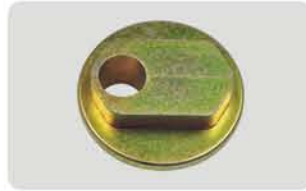
G2204
OEM No.:A2204
Weight:0.06 lbs
 John Deere bushing for planter arm use on G69141.



REPLACEMENT PARTS FOR JOHN DEERE PLANTERS



G48290
OEM No.:A48290
Weight:0.19 lbs
 Left hand bushing for JD 7200 closing wheel arm. Replaces JD No. A48290, size:0.492"x 1.576"x 0.335" Applications John Deere 1760,1780,7200, 7300 and 7340.



G48430
OEM No.:A48430,GB0219
Weight:0.24 lbs
 Right hand (cam) bushing for JD 7200 closing wheel arm. Replaces JD No. A48430, fits John Deere 7300 Series, MaxEmerge® 2 Planters.



G53242
OEM No.:A53242
Weight:0.11 lbs
 Shift collar bushing for disc closing attachment on John Deere Model 7200 and 7300. Also replaces 1236080 on G31217 closing wheel arm. Bushing is .48" ID x 1.25" (Flange base) OD x .985" Tall wall is .59" thick.



G55888
OEM No.:A55888
Weight:0.28 lbs
 John Deere bushing for closing wheel arm 2 used per row, work with G69141 arm, Fits closing wheel kit on MaxEmerge® Plus, Pro & XP Pro,1530,1535.



G52556
OEM No.:A52556
Weight:0.05 lbs
 John Deere spacer for closing wheel arm work with G37552, G69141.



G51723
OEM No.:A51723
Weight:0.15 lbs
 Cam bushing for John Deere 7200,7300 cotton special.



G78121
OEM No.:A78121
Weight:
 Bushing, 13/16"wide. Fits John Deere planter row units. 1 used per row on Pro, XP Pro, MaxEmerge™5, ExactEmerge™.



G49465
OEM No.:A49465
Weight:0.10 lbs
 Bushing, 21/32" wide.Fits John Deere planter row units. 2 used per row on MaxEmerge®2, Plus, XP; John Deere drills 1530, 1535.1 used per row on Pro, XP Pro.



G48515
OEM No.:A48515
Weight:0.1 lbs
 Pivot bushing for parallel arms. Replaces JD A48515 Applications: For Front and Rear upper parallel arms and front lower parallel arms on MaxEmerge® 2 size:0.658"x 1.084"x0.568".



G23789
OEM No.:A23789 GB0218
Weight:0.04 lbs
 Bushing for parallel upper and lower arms on JD 7000 and Kinze. Replaces JD No. A23789 & Kinze GB0218. 875" OD, .65" ID, .58" long.



G25915
OEM No.:A25915
Weight: 0.31 lbs
 Bearing Sleeve for Gauge Wheel Assemblies, fits B21015 and B203001 bearing.



G64190
OEM No.:A64190, A23337
Weight:0.23 lbs
 Wheel arm pivot bushing. Fits John Deere planters 7000, 7100, 7200, 1750, 1770



REPLACEMENT PARTS FOR JOHN DEERE PLANTERS



G30966

OEM No.:FC6007,B30966
Weight:0.08 lbs

Spacer bushing, use with G22628. 1-1/2" overall length.



G37552

OEM No.:AA37552
AA37839

Weight:7.15 lbs

Closing wheel arm for JD1760, 1780, 7200, 7300, 7340 planters. Replace JD No. AA37552 & AA37839. Comes with spindles for wheels.



G53118

OEM No.:A53118

Weight:5.5 lbs

Closing wheel arm stop. Fits MaxEmerge®2. Also fits MaxEmerge® Plus equipped with single closing wheel attachment. Replaces JD No. A53118.



G52062

OEM No.:A52062

Weight:0.15 lbs

John Deere Idler Arm, Poly.

Replaces JD No. A52062.



G25369

OEM No.:A25369 A50564
GA2056

Weight:0.34 lbs

Idler arm for seed drive chain tightener on vacuum and finger pickup units. Fits 7000, 7200 prior to 1992 & 1700 series. Replaces JD No. A25369 and A50564, also Kinze NO. GA2056.



G23113

OEM No.:AA23113

Weight:0.54 lbs

Liquid fertilizer spout for JD 7000 planters with double disc fertilizer openers. Replaces John Deere No. AA23113. Used on 7000 Integral, 7000 Conservation Drawn and 7000 Folding Drawn planters.



G35913

OEM No.:B35913

Weight:0.10 lbs

Inside fertilizer scraper for double disc openers. One used per row.



G2400

OEM No.:WFHUB

Weight:2.20 lbs

Fertilizer Hub for JD Double Disc Openers, Fertilizer unit cast hub.



204PY3

OEM No.:204PY3
AA21480 GA2014

Weight:0.27 lbs

204 series seed opener bearing. 5/8" hole. Fits multiple planter openers including John Deere, White, and Kinze. Bearing for Crustbuster openers. Replaces No's 400580 & 401042. 2 used per opener on Crustbuster All Plant series.



G33879

OEM No.:AA33879
A28135 GB0113

Weight:3.42 lbs

Cast iron closing wheel arm stop, painted green. Fits John Deere 7000, 7100; Kinze (except 3000 series). Replaces JD No. A28135, A33879; Kinze No. GB0113.



G31217

OEM No.:AA31217 FC6012
GA6056

Weight:6.08 lbs

Closing wheel arm for John Deere 7000, 7100. Replaces JD No. AA31217. Can be used to replace Kinze GA6056.



G80203

OEM No.:A80203

Weight: 1.0 lbs

John Deere Seed tube protector for XP row units. Replaces JD No. A80203.



REPLACEMENT PARTS FOR JOHN DEERE PLANTERS



G61577
OEM No.:A61577 GB6241
Weight:1.00 lbs
 John Deere seed guard, fits 1700 series planter units and attachments, for uses with MaxEmerge® curved seed tube bracket welded to seed guard. Fits Kinze planters (except 3000) series, Fits JD 7000,7100 MaxEmerge®,1760,1780,7200 and 7300 planters.



G41692
OEM No.:A41692 GB0241
Weight:0.83 lbs
 Lower guard casting. Replaces JD No. A41692, Kinze No. GB0241. Used on John Deere 7000, 7200, MaxEmerge® Plus and older Kinze planters. Now with seed tube bracket to hold the seed tube in position.



G48879
OEM No.:A48879
Weight:0.60 lbs
 Opener guard to fit John Deere 7200 and newer planters. Replaces JD No. A48879.



G54868
OEM No.:A54868
Weight:1.8 lbs
 John Deere Planter support, seed guard, replace A54868.



G56785
OEM No.:A56785
Weight:0.24 lbs
 Seed tube for JD planter Will replace JD A56785.



G56784
OEM No.:A56784
Weight:0.28 lbs
 John Deere seed tube for JD 1700 planter, Will replace JD A56784. Regular curve with large monitor hole. Seed monitor hole is .71" ID.



G55880
OEM No.:A55880 A48302
Weight:0.28 lbs
 Seed tube for JD 7240, 7340 planter with small monitor hole. Will replace JD A48302 and A55880. Seed monitor hole is .53" ID.



G67780
OEM No.:AA67780
Weight:0.30 lbs
 John Deere Seed tube kit includes seal and 2 tie bands. For 7300, 1700 Series, 1530, 1535, XP, XP-Pro. One sensor hole 3/4" , top of tube is wide.



G46172
OEM No.:A46172
Weight:0.20 lbs
 John Deere Planter seed tubes, replace JD A46172.



G57466
OEM No.:AA57466
Weight:8.13 lbs
 13.5" fertilizer disc opener. Fits John Deere planters with fertilizer attachment that mounts to fertilizer bar. Also fits Groff.



G22836
OEM No.:A22836, GD11845,FCV1986
Weight:0.05 lbs
 Dust cap only for double disc fertilizer openers. Made of metal, Zinc covered.Fits for John Deere 1700, 1750, 1760, 7000-7340 MaxEmerge™ planters, 1525, 1530 grain drills.



G55984
OEM No.:A55984,AP00178
Weight:0.033 lbs
 Seed tube clip for JD 1785 & 1985 XP Will replace JD A55984,AP00178 clip, stclip



REPLACEMENT PARTS FOR JOHN DEERE PLANTERS



G22977
OEM No.:AA22977
Weight:0.22 lbs
 Rubber wheel Replace John Deere Wheel AA22977 Fits all JD 7000 and 7100.



G36212
OEM No.:AA36212
Weight:1.3 lbs
 Bearing with 19 tooth sprocket, 7/8" hex bore, 2-1/8" width. Used on 7200-7300 and 1700 series planters row unit and planter drive line. Replaces JD No. AA36212.



G35645
OEM No.:AA35645
AA37839
Weight:1.4 lbs
 Sprocket and bearing with standard for row unit, 19 tooth Fits 7300 JD 7200 and 1700 series planters. Replaces JD No. AA35645. Hub width is 3.25".



G30654
OEM No.:AA21286
AA30654,GA2057
Weight:1.24 lbs
 Planter Drive Sprocket -9/16" hex.



G34259
OEM No.:AA34259
Weight:0.7 lbs
 Bearing for clutch actuator shaft. 9/16" hex bore. Fits John Deere 7000 flex fold, 7200 & 1750. Replaces JD No. AA34259.



G35646
OEM No.:AA35646
Weight:0.65 lbs
 Bearing assembly for seed drive line, 7/8" hex bore. Replaces JD No. AA35646. Fits 7200 flex fold, 1710, 1760, 17600NT, 1770, 1780, & 1790.



G133868
OEM No.:AH133868,
GA1720
Weight:1.22 lbs
 Bearing with 19 tooth sprocket, 7/8" hex bore, 1-1/2" width. Used on John Deere 7200, 7300 and 1700 series planters row unit and planter drive line.



G6000
OEM No.:N/A
Weight:2.5 lbs
 8" Notched covering disc for CASE-IH, John Deere and Monosem planters, fits late model 800 series, all 900 series and 1200 series. Used in conjunctions with G6001 notched disc. with dust cap 15DUSTCMTL



G6001
OEM No.:N/A
Weight:2.5 lbs
 8" Notched covering disc for CASE-IH, John Deere and Monosem planters, fits late model 800 series, all 900 series and 1200 series. Used in conjunctions with G6000 notched disc. with dust cap 15DUSTCMTL.



G35638
OEM No.:203KYP2
AA34132 AA35638
Weight:0.61 lbs
 John Deere Closing wheel bearing for John Deere planter 7200, 7300 and IHC mode 296 & 386 planter, Bore Size: 0.669" Round, O.D.: 1.574" flat, IR width: 0.55", OR width: 0.472".



G28271
OEM No.:AA28271
205KRR2
Weight:0.44 lbs
 Bearing with 7/8" hex bore. Has flat O.D. Replaces JD No. AA28271.



G22097
OEM No.:AA22097
205KRRB2
Weight:0.40 lbs
 Bearing with 7/8" hex bore. Has curved O.D., used on seed and fertilizer drives. Replaces JD No. AA22097.



REPLACEMENT PARTS FOR JOHN DEERE PLANTERS



203JD

OEM No.:203JD AA34132
203KYP2

Weight:0.19 lbs

Special Ag Bearing Fits John Deere 7300 Planter Wheel and IHC Model 296 & 386 Planter Disc Opener



6203-2RST

OEM No.:6203-2RST
Weight:0.15 lbs

203 series Ball Bearing-trash guard seals on both side, high quality.



G123811

OEM No.:M123811
Weight:0.25 lbs

John Deere front wheel bushing, 2 used per wheel. Replaces AYP/ROPER/SEARS: 9040H and John Deere M123811. Height: 1", OD: 1-3/8", ID: 3/4".



G25447

OEM No.:A25447 GD1035
Weight:0.07 lbs

John Deere and Kinze plastic drive release handle, for plateless hopper drive, will replace JD A25447 and Kinze GD1035.



G52024

OEM No.:A52024
Weight:0.014 lbs

John Deere dust cap for seed bearing housing, 1 1/2" diameter, Used on G55927, G37474



G78218

OEM No.:G78218
Weight:0.008 lbs

John Deere dust cap for seed disc opener, smaller cap diameter 1 1/4"



G22628

OEM No.:A22628
Weight:0.15 lbs

John Deere plastic idler the diameter is 2-1/4", for drive wheels, will replace John Deere A22628.



G22838

OEM No.:A22838
Weight:0.05 lbs

John Deere plastic idler the diameter is 1-9/16", for seed drive on vacuum and finger pickup units, also used on insecticide/herbicide drive. Fits JD MaxEmerge 2 prior to 1992, will replace JD A22838.



G30969

OEM No.:B30969
Weight:0.12 lbs

John Deere plastic idler used on liquid or dry fertilizer driver, seed transmission drive and insecticide or herbicide drive, will replace John Deere B30969.



G30968

OEM No.:B30968
Weight:0.11 lbs

John Deere plastic idler with 1-7/8" dia, used on liquid or dry fertilizer driver, seed transmission drive and insecticide or herbicide drive, will replace John Deere B30968.



G43610

OEM No.:A43610
Weight: 0.02 lbs

Rubber spacer, transmission: 7200,7240,7300,7340,1760, 1780,1700 XP models.



G6200108

OEM No.:N/M
Weight:6.31 lbs

Square twisted link drag chain kit for planters. Some planters require drilling a hole. Fits most planters. 5/8" twisted link chain improves seed to soil contact. Beveled, five sided links pull more heavy soil onto the trench. Attaches easily to row unit frame. Improves stands and yields when coupled with planters applying insecticide



REPLACEMENT PARTS FOR JOHN DEERE PLANTERS



G24930

OEM No.:A24930

Weight:1.16 lbs

Sprocket for dog ratchet carrier. Fits John Deere 7000 and 7100 planters with round countershaft drive.



G24641

OEM No.:A24641,GD1073

Weight:0.24 lbs

John Deere planter plate. Soybean seed guide. Replaces A24641 and GD1073. Applies to John Deere 7000, 7100, 2000, 3000



G36323

OEM No.:A36323

Weight:0.29 lbs

John Deere soybean seed guide plate, Fits John Deere 7000, 7100, 2000, 3000.



G26713

OEM No.:AA26713,GA2031

Weight:0.36 lbs

John Deere soybean seed cup. Fits John Deere 7000, 7100, 2000, 3000. Replaces John Deere AA26713 and Kinze GA2031.



G28036

OEM No.:AA28036

Weight:0.46 lbs

John Deere soybean seed guide plate. Fits John Deere 7000, 7100, 2000, 3000.



G25319

OEM No.:AA25319

Weight:0.41 lbs

John Deere bowl



G28518

OEM No.:A28518 A63534

GD1065

Weight:0.08 lbs

Idler arm spring. Replaces John Deere No. A28518, A63534 and Kinze GD1065. Used on 7000, 7200, and 1700 series.



G35601

OEM No.:B35601

Weight:0.36 lbs

Dry fertilizer rubber tube for John Deere single and double disc fertilizer openers. Replaces John Deere No B35601.



G62609

OEM No.:A62609

Weight:0.45 lbs

Rocker for walking gauge wheel. 3/4" pivot hole and built-in pivot stops. Fits MaxEmerge®Plus, Pro, XP Pro, 1530, 1535.



G58670

OEM No.:A58670

Weight:0.23 lbs

Pivot bolt for walking gauge wheel. Fits John Deere MaxEmerge®Plus, Pro, XP Pro, 1530 and 1535 planters. Also late John Deere MaxEmerge®2 planters.



G82772

OEM No.:A82772

Weight:1.50 lbs

John Deere XP planter stop



G82772K

OEM No.:A57482,A62609

A58670

Weight:2.18 lbs

Walking Pivot Stop kit for John Deere MaxEmerge Plus, Pro, XP, XP Pro, 1530, 1535, also late MaxEmerge, including: A82772 John Deere XP planter stop. A62609 John Deere XP planter rocker. A58670 John Deere XP planter pivot bolt



REPLACEMENT PARTS FOR JOHN DEERE PLANTERS



G57482
OEM No.:AA57482
Weight:2.03 lbs
 Rocker body with bushing and hardware. Fits John Deere planter row units MaxEmerge®2, MaxEmerge®Plus, Pro; 1530 drills.



G52149
OEM No.:A52149
Weight:7.98 lbs
 Fertilizer Shoe, left hand, for converting from liquid to dry, Fits Models 7200-1770.



G52150
OEM No.:A52150
Weight:7.98 lbs
 Fertilizer Shoe, Right Hand, For Converting Liquid to Dry On John Deere Planters, Fits Models 7200-1770



G52442
OEM No.:A52442
Weight:4.50 lbs
 RH arm bracket for dry fertilizer shoe, used with G52150 shoe.



G52443
OEM No.:A52443
Weight:4.50 lbs
 LH arm bracket for dry fertilizer shoe, used with G52149 shoe.



G82832
OEM No.:A82832
Weight:4.63 lbs
 Liquid single disc fertilizer cast shoe, RIGHT hand. Used on John Deere single disc openers mounted to 6"x10" or 7"x7" fertilizer bars s/n 720101 and up.



G82833
OEM No.:A82833
Weight:4.63 lbs
 Liquid single disc fertilizer cast shoe, LEFT hand. Used on John Deere single disc openers mounted to 6"x10" or 7"x7" fertilizer bars s/n 720101 and up.



G52156
OEM No.:A52156
Weight:5.62 lbs
 Liquid single disc fertilizer cast shoe, RIGHT Hand. Used on John Deere single disc openers mounted to 3"x3", 3"x7" or 5"x7" fertilizer bars; also 6"x10" or 7" x 7" bars prior to s/n 720100.



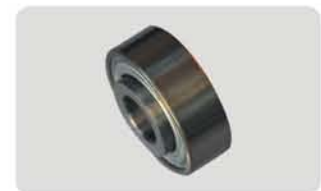
G52157
OEM No.:A52157
Weight:5.73 lbs
 Liquid single disc fertilizer cast shoe, LEFT Hand. Used on John Deere single disc openers mounted to 3"x3", 3"x7" or 5"x7" fertilizer bars; also 6"x10" or 7"x7" bars prior to s/n 720100.



G32729
OEM No.:AA32729
Weight:0.29 lbs
 14 tooth idler sprocket for 40 chain. Fits seed transmission on John Deere planters 7200, 7300 and 1700 series; dry fertilizer transmission on 7200, 7240, 1750, 1770, 1780, 7000 Flex-Fold.



G52776
OEM No.:AA32776
Weight:0.35 lbs
 12 tooth Idler sprocket for 50 chain. For use on seed transmission, also drive wheels on John Deere planters 7200, 7300, 7340, 1700, 1705, 1710, 1715, 1720, 1725, 1730, 1735, 1750, 1755, 1770, 1770NT, 1775NT, 1790, 1795, DB series. Bore size 1/2".



G21480
OEM No.:AA21480,GA2014
Weight:0.27 lbs
 Bearing. Fits John Deere Tru Vee™ seed and fertilizer opener (except XP and XP Pro). Kinze® seed and fertilizer openers, residue wheels, row mounted disc furrowers and early notched single disc fertilizer opener. White 6000 and 8000 series seed and fertilizer opener.



REPLACEMENT PARTS FOR JOHN DEERE PLANTERS



G13975
OEM No.:CJ13975
Weight:0.29 lbs
 Ball bearing,
 ID:15mm OD:42mm Width:22mm



G78964
OEM No.:HXE78964
Weight:0.77 lbs
 John Deere plate.



G61571
OEM No.:A61571
Weight:5.27 lbs
 John Deere Planter Upper Parallel Shank Arm. Extended Length 23", Fits John Deere planter row units MaxEmerge®2, Plus, XP, Pro, XP Pro, MaxEmerge™5, ExactEmerge™, 1700,1760,1780, 7200,7300 and John Deere drills 1530, 1535. 2 Required per Row.



G76223
OEM No.:A76223
Weight:3.57 lbs
 John Deere Planter Upper Parallel Shank Arm. standard length 16" . Fits John Deere planter row units MaxEmerge®2, Plus, XP, Pro, XP Pro, MaxEmerge™5, ExactEmerge™, 1700,1760,1780, 7200,7300 and John Deere drills 1530, 1535. 2 Required per Row.



G52444
OEM No.:A52444
Weight:3.88 lbs
 Yoke for heavy down pressure attachment. Fits John Deere planter row units MaxEmerge®2, Plus, Pro, XP, XP Pro, MaxEmerge™5; John Deere drills 1530, 1535.



G28970
OEM No.:BA28970
Weight:27.01lbs
 John Deere Heavy Duty Down Force Assembly for MaxEmerge Planter units., Fits John Deere Planter/Drills 1530,1750,1760, 1780,7200,7300,DB44,DB58, DB66,DB80 and DB90.Replace John Deere BA28970.
 Heavy-duty adjustable planting unit down force springs for regular-length parallel arms, one-row (required with unit-mounted coulters)Adjustable, heavy-duty down force can be used to apply 0 lb to 400 lb of down force per row and has four settings: 0 lb, 125 lb, 250 lb, and 400 lb. The adjustable, heavy-duty down force system can be used in all planting conditions and is compatible with all tillage attachments (recommended with unit-mounted coulters, row cleaners, and unit-mounted double-disk fertilizer openers in conservation planting conditions).



G52092
OEM No.:A52092
Weight:17.75 lbs
 Lower parallel arm, standard length (15-3/4" overall). Fits John Deere planter row units MaxEmerge®2, Plus, XP, Pro, XP Pro, MaxEmerge 5, ExactEmerge. John Deere drills 1530, 1535.



G84382
OEM No.:A84382
Weight:36.38 lbs
 Lower parallel arm, extended length (23" overall). Fits John Deere planter row units MaxEmerge®2, Plus, XP, Pro, XP Pro, MaxEmerge 5, ExactEmerge. John Deere drills 1530, 1535.